

ABCResearch

Archives of Basic and Clinical Research

Official Journal of the Erzincan Binali Yıldırım University School of Medicine

Correlation of Antenatal and Postnatal Maternal Uterine and Renal Artery Doppler Parameters with Proteinuria in Preeclamptic Pregnant Women
Merve Eski Arslan, Gülseren Dinç

Approach to Deep Neck Infections: A Single-Center Experience

Serkan Altıparmak, Ayhan Kars, Mustafa Cihan Dikmen, İsmail Salcan

Primary Bone Lymphoma: A Retrospective Analysis of 15 Patients Treated in a Single Tertiary Center

Mehmet Süleyman Abul, Ebubekir Bektaş, Ömer Faruk Sevim, Seyit Ali Gümüştaş

Psychiatrists' Attitudes and Perspectives Towards Incarcerated Patients: Biases, Ethical Dilemmas, and Clinical Challenges

Ulaş Korkmaz, Fatma Gül Helvacı Çelik, Meltem Hazel Şimşek

The Influence of Gender and Age on Lumbar Lordosis: A Magnetic Resonance Imaging Study

Berihat Kızılgöz, Hüseyin Aydemir

Multiparametric MRI Assessment of Atypical Transitional Zone Nodules in PI-RADS v2.1

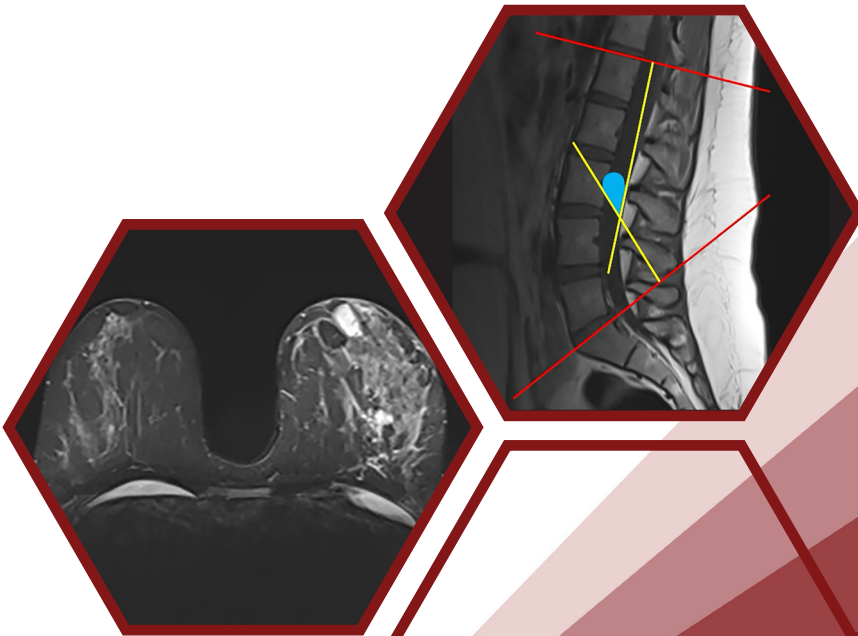
Halil Özer, Berrak Barutcu Asfuroğlu, Umut Asfuroğlu, Abidin Kılınçer, Emre Altıntaş, Mehmet Kaynar, Mustafa Koplay

The Rhomboid Fossa in Turkish Children: A Comprehensive Analysis of Chest CT

Gizem Timuçin Yiğman, Hande Özen Atalay, Evrim Özmen

Correlation Between Neutrophil-to-Lymphocyte Ratio and Severity Scores in Septic Patients Presenting to Emergency Department

Rahul Agrawal, Reshma Patel, Umang Patel



Volume 7
Issue 3



Editor in Chief

Mecit Kantarcı

Department of Radiology, Erzincan Binali Yıldırım University, Faculty of Medicine; Atatürk University, Faculty of Medicine, Erzincan, Erzurum, Türkiye

akkanrad@hotmail.com

ORCID: 0000-0002-1043-6719

Deputy Editor

Adalet Özçiçek

Department of Internal Medicine, Erzincan Binali Yıldırım University School of Medicine, Erzincan, Türkiye

aozcicek@erzincan.edu.tr

ORCID: 0000-0003-3029-4524

Associate Editors

Surgical Sciences

İsmet Yalkın Çamurcu

Department of Orthopaedics and Traumatology, Medicalpark Bursa Hospital, Bursa, Türkiye

yalkin.camurcu@gmail.com

ORCID: 0000-0002-3900-5162

Internal Medicine

Fatih Özçiçek

Department of Internal Medicine, Erzincan Binali Yıldırım University School of Medicine, Erzincan, Türkiye

fozcicek@hotmail.com

ORCID: 0000-0001-5088-4893

Basic Medical Sciences

Cuma Mertoğlu

Department of Medical Biochemistry, İnönü University School of Medicine, Malatya, Türkiye

drcumamert@hotmail.com

ORCID: 0000-0003-3497-4092

Betül Çiçek

Department of Physiology, Erzincan Binali Yıldırım University School of Medicine, Erzincan, Türkiye

betulll.cicekk@hotmail.com

ORCID: 0000-0003-1395-1326

Dentistry

Kezban Meltem Çolak

Department of Endodontics, Atatürk University Faculty of Dentistry, Erzurum, Türkiye

meltem25@gmail.com

ORCID: 0000-0001-5472-677X

Health Sciences

Nadiye Özer

Department of Surgical Nursing, Erzincan Binali Yıldırım University Faculty of Health Science, Erzincan, Türkiye

nadiyeozer@hotmail.com

ORCID: 0000-0002-6622-8222

Biostatistical Editor

Serhat Hayme

Department of Biostatistics, Erzincan Binali Yıldırım University School of Medicine, Erzincan, Türkiye

serhathayme@gmail.com

Please refer to the journal's webpage (<https://abcresearch.net/>) for "Journal Policies" and "Instructions".

The editorial and publication process of the Archives of Basic and Clinical Research are shaped in accordance with the guidelines of the ICMJE, WAME, CSE, COPE, EASE, and NISO. The journal is in conformity with the Principles of Transparency and Best Practice in Scholarly Publishing.

Archives of Basic and Clinical Research is indexed in CNKI, DOAJ, TUBITAK Ulakbim TR Index, EBSCO, and TurkMedline.

The journal is published online.

Owner: Erzincan Binali Yıldırım University

Responsible Manager: Mecit Kantarcı

Editorial Board

Emin Murat Akbaş

Department of Internal Medicine, Division of Endocrinology, Yalova University School of Medicine, Yalova, Türkiye

Mustafa Akkuş

Department of Mental Health and Disease, Erzincan Binali Yıldırım University School of Medicine, Erzincan, Türkiye

Sonay Aydın

Department of Radiology, Erzincan Binali Yıldırım University School of Medicine, Erzincan, Türkiye

Bülent Aydın

Department of General Surgery, Akdeniz University School of Medicine, Antalya, Türkiye

Adnan Ayvaz

Division of Pediatric Neurology, Okan University School of Medicine, İstanbul, Türkiye

Şenol Bıçer

Department of Pediatric Surgery, Erzincan Binali Yıldırım University School of Medicine, Erzincan, Türkiye

Abdullah Büyük

Department of General Surgery, University of Health Sciences, Elazığ Health Application and Research Center, (Clinic of General Surgery, Elazığ Fethi Sekin City Hospital), Elazığ, Türkiye

Mutlu Büyüklü

Department of Cardiology, Erzincan Binali Yıldırım University School of Medicine, Erzincan, Türkiye

Tayfun Çakır

Department of Brain and Nerve Surgery, Samsun Training and Research Hospital, Samsun, Türkiye

Ayşe Çarlıoğlu

Division of Endocrinology, Lokman Hekim University School of Medicine, Ankara, Türkiye

Fehmi Çelebi

Department of General Surgery, Sakarya University School of Medicine, Sakarya, Türkiye

Abdulkadir Çoban

Department of Medical Biochemistry, Erzincan Binali Yıldırım University School of Medicine, Erzincan, Türkiye

Betül Çiçek

Department of Physiology, Erzincan Binali Yıldırım University School of Medicine, Erzincan, Türkiye

Ertunç Dayı

Department of Oral & Maxillofacial Surgery, Erzincan Binali Yıldırım University School of Dentistry, Erzincan, Türkiye

Levent Demirtaş

Department of Internal Medicine, Erzincan Binali Yıldırım University School of Medicine, Erzincan, Türkiye

İsmail Demiryılmaz

Department of General Surgery, Akdeniz University School of Medicine, Antalya, Türkiye

Cihan Duran

Division of Diagnostic Imaging, University of Texas, MD Anderson Cancer Center, Houston, Texas, USA

Menduh Dursun

Department of Radiology, İstanbul University İstanbul School of Medicine, İstanbul, Türkiye

Bekir Elma

Department of Thoracic Surgery, Gaziantep University School of Medicine, Gaziantep, Türkiye

İzzet Emir

Department of Cardiovascular Surgery, Erzincan Binali Yıldırım University School of Medicine, Erzincan, Türkiye

Abdullah Erdoğan

Department of Urology, Erzincan Binali Yıldırım University School of Medicine, Erzincan, Türkiye

Mehmet Gündoğdu

Department of Internal Medicine, Division of Hematology, Erzincan Binali Yıldırım University School of Medicine, Erzincan, Türkiye

Alp Gürkan

Department of General Surgery, Okan University School of Medicine, İstanbul, Türkiye

Ender Hür

Division of Nephrology, Manisa Merkezefendi State Hospital, Manisa, Türkiye

Ali Veysel Kara

Department of Internal Medicine, Division of Nephrology, Erzincan Binali Yıldırım University School of Medicine, Erzincan, Türkiye

Faruk Karakeçili

Department of Infectious Diseases and Clinical Microbiology, Erzincan Binali Yıldırım University School of Medicine, Erzincan, Türkiye

Erdal Karavaş

Department of Radiology, Bandırma Onyedi Eylül University, School of Medicine, Balıkesir, Türkiye

Muşturay Karçaaltıncaba

Department of Radiology, Hacettepe University School of Medicine, Ankara, Türkiye

Selim Kayacı

Department of Brain and Nerve Surgery, Erzincan Binali Yıldırım University School of Medicine, Erzincan, Türkiye

Ercüment Keskin

Department of Urology, Erzincan Binali Yıldırım University School of Medicine, Erzincan, Türkiye

Nizamettin Koçkara

Department of Orthopedics and Traumatology, Erzincan Binali Yıldırım University School of Medicine, Erzincan, Türkiye

**Mehmet Nuri Konya**

Department of Orthopedics and Traumatology, Afyonkarahisar University of Health Sciences, Afyonkarahisar, Türkiye

Korgün Koral

Department of Radiology, University of Texas Southwestern Medical Center, Dallas, Texas, ABD

Emin Köse

Department of General Surgery, University of Health Sciences, İstanbul Okmeydanı Health Application and Research Center, İstanbul, Türkiye

Özlem Kurt Azap

Department of Infections Diseases and Clinical Microbiology, Başkent University School of Medicine, Ankara, Türkiye

Ergün Kutlusoy

Department of Cardiology, Atatürk City Hospital, Balıkesir, Türkiye

Ufuk Kuyruklu Yıldız

Department of Anesthesiology and Reanimation, Erzincan Binali Yıldırım University School of Medicine, Erzincan, Türkiye

İlke Küpeli

Department of Anesthesiology and Reanimation, Biruni University School of Medicine, İstanbul, Türkiye

Akın Levent

Department of Radiology, Erzincan Binali Yıldırım University School of Medicine, Erzincan, Türkiye

Cenk Naykı

Department of Obstetrics and Gynaecology, İzmir Democracy University Buca Seyfi Demirsoy Training and Research Hospital, İzmir, Türkiye

Ümit Arslan Naykı

Department of Obstetrics and Gynaecology, Egepol Hospitals, İzmir, Türkiye

Didem Onk

Department of Anesthesiology and Reanimation, Erzincan Binali Yıldırım University School of Medicine, Erzincan, Türkiye

Oruç Alper Onk

Department of Cardiovascular Surgery, İstanbul Training and Research Hospital, İstanbul, Türkiye

Levent Oğuzkurt

Department of Radiology, Koc University Hospital, İstanbul, Türkiye

Aytekın Oto

Department of Radiology and Surgery, UChicago Medicine, Illinois, USA

Hasan Mücahit Özbaş

Division of Hematology, Giresun University School of Medicine, Giresun, Türkiye

Aslı Özbek Bilgin

Department of Medical Pharmacology, Erzincan Binali Yıldırım University School of Medicine, Erzincan, Türkiye

Pınar Öztürk

Department of Emergency Medicine, Erzincan Binali Yıldırım University School of Medicine, Erzincan, Türkiye

İlyas Sayar

Department of Medical Pathology, Erzincan Binali Yıldırım University School of Medicine, Erzincan, Türkiye

Hakan Sofu

Department of Orthopedics and Traumatology, Altınbaş University School of Medicine, İstanbul, Türkiye

İlknur Sürücü Kara

Department of Pediatric Metabolic Diseases, Gaziantep City Hospital, Gaziantep, Türkiye

İbrahim Şahin

Department of Medical Biology, Erzincan Binali Yıldırım University School of Medicine, Erzincan, Türkiye

Vedat Şahin

Department of Orthopedics and Traumatology, University of Health Sciences, Baltalımanı Metin Sabancı Bone Diseases Training and Research Hospital, İstanbul, Türkiye

Garip Şahin

Division of Nephrology, Osmangazi University School of Medicine, Eskişehir, Türkiye

İdris Şahin

Division of Nephrology, İnönü University School of Medicine, Malatya, Türkiye

Aslı Şener

Department of Emergency Medicine, İzmir Çiğli Regional Education Hospital, İzmir, Türkiye

Kültigin Türkmen

Division of Nephrology, Necmettin Erbakan University Meram School of Medicine, Konya, Türkiye

Adem Uğurlu

Clinic of Eye Diseases, Erzincan Mengücek Gazi Training and Research Hospital, Erzincan, Türkiye

Paşa Uluğ

Department of Obstetrics and Gynaecology, İstanbul Haseki Training and Research Hospital, İstanbul, Türkiye

Edhem Ünver

Department of Chest Diseases, Erzincan Binali Yıldırım University School of Medicine, Erzincan, Türkiye

Mustafa Ünübol

Division of Endocrinology, Adnan Menderes University School of Medicine, Aydın, Türkiye

Judy Yee

Department of Radiology, Montefiore Medical Centre, Albert Einstein College of Medicine, New York, USA

Gürsel Yıldız

Division of Nephrology, Başakşehir Çam and Sakura City Hospital, İstanbul, Türkiye

İsmayil Yılmaz

Department of General Surgery, University of Health Sciences, İstanbul Prof. Dr. Cemil Taşçıoğlu City Hospital, İstanbul, Türkiye

Contents

Research Articles

- 135** Correlation of Antenatal and Postnatal Maternal Uterine and Renal Artery Doppler Parameters with Proteinuria in Preeclamptic Pregnant Women
Merve Eski Arslan, Gülseren Dinç
- 142** Approach to Deep Neck Infections: A Single-Center Experience
Serkan Altıparmak, Ayhan Kars, Mustafa Cihan Dikmen, İsmail Salcan
- 147** Primary Bone Lymphoma: A Retrospective Analysis of 15 Patients Treated in a Single Tertiary Center
Mehmet Süleyman Abul, Ebubekir Bektaş, Ömer Faruk Sevim, Seyit Ali Gümüştas
- 153** Psychiatrists' Attitudes and Perspectives Towards Incarcerated Patients: Biases, Ethical Dilemmas, and Clinical Challenges
Ulaş Korkmaz, Fatma Gül Helvacı Çelik, Meltem Hazel Şimşek
- 163** The Influence of Gender and Age on Lumbar Lordosis: A Magnetic Resonance Imaging Study
Berihat Kızılgöz, Hüseyin Aydemir
- 168** Multiparametric MRI Assessment of Atypical Transitional Zone Nodules in PI-RADS v2.1
Halil Özer, Berrak Barutcu Asfuroğlu, Umut Asfuroğlu, Abidin Kılınçer, Emre Altıntaş, Mehmet Kaynar, Mustafa Koplay
- 174** The Rhomboid Fossa in Turkish Children: A Comprehensive Analysis of Chest CT
Gizem Timoçin Yığman, Hande Özen Atalay, Evrim Özmen
- 180** Correlation Between Neutrophil-to-Lymphocyte Ratio and Severity Scores in Septic Patients Presenting to Emergency Department
Rahul Agrawal, Reshma Patel, Umang Patel
- 186** C-reactive Protein/Albumin Ratio as a Predictor of Comorbidity in Migraine and Restless Legs Syndrome
Gülhan Sarıçam, Fahrettin Ege, Memet Aslanyavrusu
- 193** Detection of Pain Severity with the Full Cup Test in Knee Osteoarthritis and Its Relationship with Knee Function and Quality of Life
Gülseren Demir Karakılıç, Esra Şahingöz Bakırcı



Contents

Case Report

- 200** Imaging-Guided Diagnosis of Malignant Pericardial Involvement in an HIV-Positive Patient with Non-Hodgkin's Lymphoma

Münevver N. Duran, Daniel Ocazonez-Trujillo

Review

- 204** The Role of Imaging Methods in the Diagnosis and Treatment of Idiopathic Granulomatous Mastitis

Hüseyin Aydemir, Sonay Aydın, Mecit Kantarcı

Letter to the Editor

- 210** Risk Factors and Preventive Approaches in Early Onset Osteoarthritis

İlhan Celil Özbek

Index

2025 Referee Index

2025 Author Index

2025 Subject Index